

No.1 in Japan



Total gold medal count at the Annual Japan Sake Awards  
**16** Brands (2024 sake brewing year)

No.1 in Japan



Shipment of medical machinery and equipment parts, etc.  
**44.2 billion yen** (2023)  
**No.1 in Japan for 14 consecutive years**

No.2 in Japan



Shipment value of lacquered kitchenware and tableware  
**17 billion yen** (2022)

No.2 in Japan



Volume of peaches harvested  
**29,100 tonnes** (2024)

No.4 in Japan



Number of hot springs  
**125** hot springs (2024)

# Fukushima

## Brochure

Welcome to Fukushima Japan

ふくしま



**Fukushima Revitalization Information Portal Site**  
“Fukushima Revitalization Information Portal Site” is an official portal site that brings together information related to the revitalization of the prefecture.



Fukushima Revitalization Search



**Fukushima Today**  
Fukushima Prefecture's Coordinators for International Relations showcase the charms of Fukushima from an international perspective through social media.



Fukushima Today Search



**FUKUSHIMA TRAVEL**  
Fukushima Prefecture has attractions for every season: spring, summer, autumn, and winter. This site will make you want to visit just by looking at it.



Fukushima Travel Search

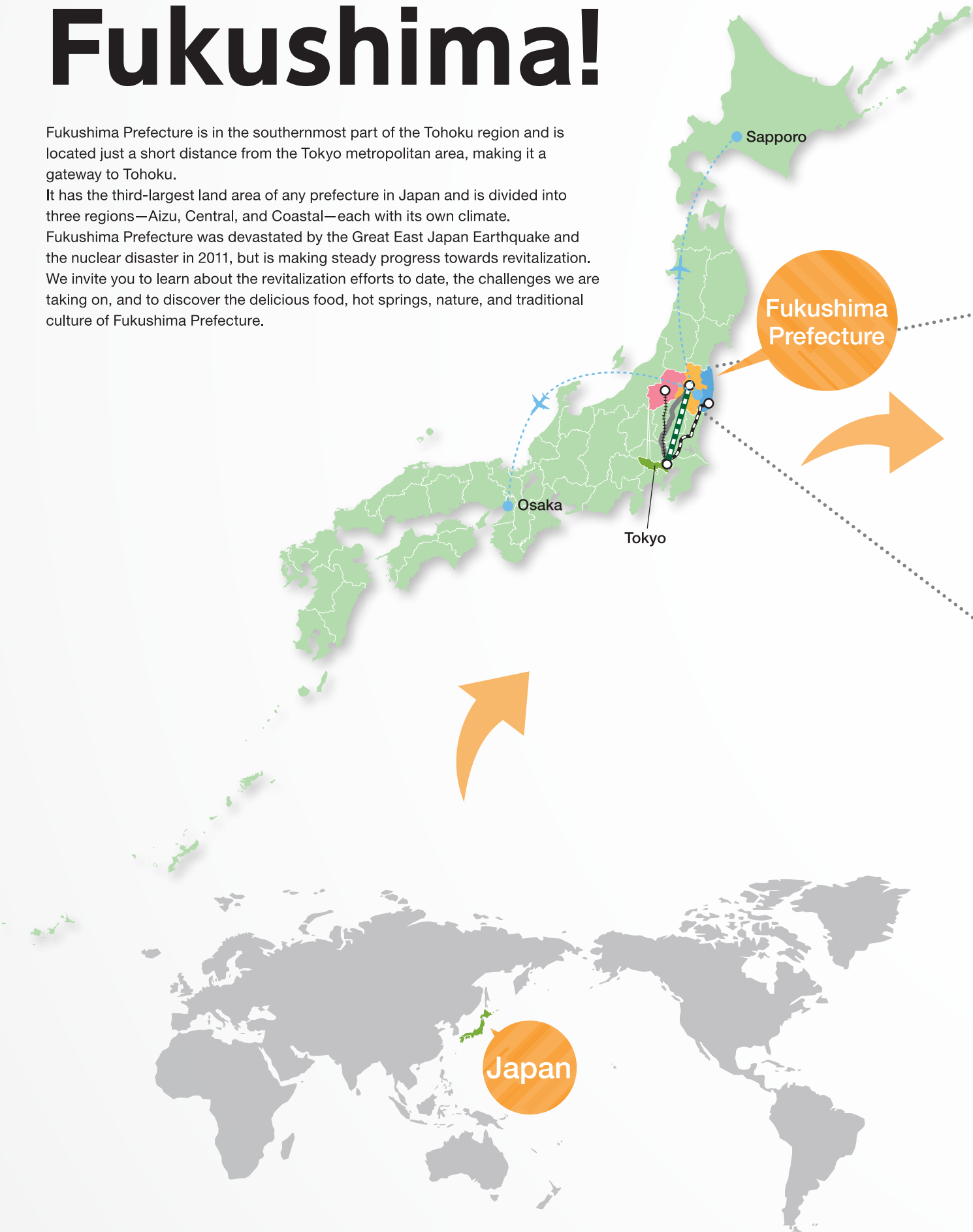


# Welcome to Fukushima!

Fukushima Prefecture is in the southernmost part of the Tohoku region and is located just a short distance from the Tokyo metropolitan area, making it a gateway to Tohoku.

It has the third-largest land area of any prefecture in Japan and is divided into three regions—Aizu, Central, and Coastal—each with its own climate.

Fukushima Prefecture was devastated by the Great East Japan Earthquake and the nuclear disaster in 2011, but is making steady progress towards revitalization. We invite you to learn about the revitalization efforts to date, the challenges we are taking on, and to discover the delicious food, hot springs, nature, and traditional culture of Fukushima Prefecture.



Approx. **80** minutes from Tokyo



Tohoku Shinkansen

- Car** Tokyo via the Metropolitan Expressway Inner Circular Route (C1) ➡ Koriyama IC, Fukushima **Approx. 3 hours**
- Plane** New Chitose Airport, Sapporo ➡ Fukushima Airport **Approx. 1 hour and 35 minutes**  
Itami Airport, Osaka ➡ Fukushima Airport **Approx. 1 hour and 10 minutes**
- Train** via JR Tohoku Shinkansen Tokyo Station ➡ Koriyama Station, Fukushima **Approx. 80 minutes**  
via JR Limited Express Hitachi Tokyo Station ➡ Iwaki Station, Fukushima **Approx. 2 hours and 15 minutes**  
via Tobu Limited Express Liberty Aizu Asakusa Station, Tokyo ➡ Aizu-Tajima Station, Fukushima **Approx. 3 hours and 10 minutes**

More detailed information about access to Fukushima: [FUKUSHIMA TRAVEL website](#)



## Aizu Region

## Central Region

## Coastal Region

**Aizu Region**  
Rich nature and history

**Central Region (Nakadori)**  
Seasonal blooms, fresh fruit, and convenient transportation access

**Coastal Region (Hamadori)**  
A destination with a warm climate, steadily advancing towards revitalization.



Fukuman Kokuzo Bosatsu Enzoji Temple (a temple dedicated to the Bodhisattva of infinite wisdom and mercy) (Yanaizu Town)



Miharu Takizakura (Miharu Town)



Bentenjima Island off Hattachi Beach (Iwaki City)





1



2



3

(Japanese only)



4



5



(Japanese only) 6



7



8



9



10

(Japanese only)

- 1 JR Tadami Line [Mishima Town]** The Tadami Line, fully reopened in 2022 after being damaged by torrential rains in Jul. 2011, is a hidden route offering breathtaking seasonal scenery.
- 2 Hanamiyama [Fukushima City]** A famous flower spot, where plum and cherry blossoms bloom in abundance. A renowned photographer has described its beauty as “a spring utopia”.
- 3 To-no-Hetsuri (River Gorge) [Shimogo Town]** A scenic area where cliffs and steep slopes rise like towers, formed by a million years of erosion and weathering.
- 4 Goshikinuma (Five-coloured lakes) [Kitashiobara Village]**  
Thirty lakes of varying sizes and various colours, each displaying a vibrant palette that changes with the weather and the seasons.
- 5 Abukuma Cave [Tamura City]** One of the most renowned limestone caves in Japan, famous for its impressive length of 4,218.3 metres, of which 600 metres are open to the public and feature a wide variety of stalactites.

- 6 Soma Nomaoui Festival [Soma City & Minamisoma City]** With a history spanning more than 1,000 years, this festival features the thrilling Armoured Horse Race and Sacred Flag Competition, with around 400 riders. These events unfold over the course of three days in the month of May.
- 7 Sazae-do [Aizuwakamatsu City]** Designated as a National Important Cultural Property, it has a curious spiral structure that allows visitors to ascend and descend without passing each other.
- 8 Shiramizu Amidado Temple [Iwaki City]**  
Built in 1160, this national treasure building is surrounded by trees that create stunning seasonal scenery.
- 9 Hinoemata Kabuki [Hinoemata Village]**  
This Kabuki tradition has been passed down by the villagers of Hinoemata for over 280 years since the Edo period, and is performed three times a year.
- 10 Ouchi-juku [Shimogo Town]** An old post town featuring thatched-roof streets. This area is included in the list of National Important Preservation Districts for Groups of Traditional Buildings.





**Onsen**  
(hot springs)



12



**Food**



15 16



13



17



18



19



20



23

- 11 Ashinomaki Onsen in Aizu [Aizuwakamatsu City]** A hot spring with a rich history of over 1,000 years, offering breathtaking seasonal canyon views and renowned for its therapeutic benefits for neuralgia and eye ailments.
- 12 Bandai Atami Onsen [Koriyama City]** This hot spring resort is located in Koriyama City, in the centre of Fukushima Prefecture. Known as the “beauty hot spring”, it is famous for its skin-smoothing properties.
- 13 Iwaki Yumoto Onsen [Iwaki City]** One of the three oldest hot springs in Japan, this onsen has numerous benefits, including promoting beautiful skin and relieving high blood pressure.

- 14 Peaches** A wide range of varieties can be enjoyed from July to September, depending on the harvest schedule. The “Akatsuki” variety is the most renowned.
- 15 Yuyake Berry (“Evening Glow” Berries)** The prefecture’s original strawberry, which can be harvested early to complement Christmas and New Year celebrations, is characterised by its exceptional sweetness.
- 16 Fukushima Fruits & Vegetables** A wide variety of fruits and vegetables are cultivated, including cucumbers and tomatoes, which are among the leading produce items in Japan.
- 17 Negi-soba (Green Onion & Soba)** A specialty of Ouchi-juku. It involves using a stick of green onion as chopsticks to eat soba noodles and nibbling on it, adding a delightful flavour.
- 18 Kitakata Ramen [Kitakata City]** One of Japan’s top three ramen types, these flat noodles are made by adding extra water to the dough and letting it rest well, and are characterised by their broad, slightly curly shape.
- 19 Enban Gyoza [Fukushima City]** This is a hearty dish, consisting of fried gyoza filled with vegetables which are arranged in the shape of a disk.
- 20 Joban Catch (Joban-mono)** Seafood caught in the convergence of the Oyashio and Kuroshio currents, renowned for its variety, quality, and flavour, is known as “Joban Catch”.
- 21 Cream Box [Koriyama City]** This local delicacy hails from Koriyama City, featuring soft bread topped generously with a sweet, milk-flavoured cream.
- 22 Ika Ninjin** A simple delicacy made by flavouring slivered squid and carrots with sake, soy sauce, mirin (sweet sake), and other ingredients.
- 23 Fukushima Rice** Ranking as the fifth-largest rice-producing prefecture in the country, Fukushima’s original variety “Fuku Warai” is recognised as the highest quality rice of all.



**Sake**



**Sake**

The sake from Fukushima is exceptionally delicious, having won 16 gold prizes, the most gold prizes in Japan, at the Annual Japan Sake Awards 2025.

輸出用酒類製造  
日本第1号登録  
Export-only sake  
“Ryusho”



Fukushima  
Sake Story



## Brewery Tours

Fukushima Prefecture has a rich history of sake brewing, with some breweries operating for over 300 years. There are more than 50 breweries in the prefecture, some of which may offer tours to visitors.  
(\*Some breweries may require advance booking, and several offer tours in English.)

**For availability of brewery tours, telephone numbers, etc.**

[Source] Sendai Regional Taxation Bureau



24



25



26

- 24 Shirakawa Daruma [Shirakawa City]** Traditional folk art from Shirakawa City, serving as a lucky charm adorned with auspicious symbols, including cranes, turtles, pine trees, bamboo, and plum blossoms.
- 25 Obori Soma Ware [Namie Town, etc.]** A nationally designated traditional pottery craft from the Obori area in Namie Town, once disrupted by forced evacuation, is now being revitalized in the town.
- 26 Akabeko [Yanaizu Town & Aizuwakamatsu City]** A traditional craft from Aizu, inspired by the legend of the red cow at a temple dedicated to Fukuman Kokuzo Bosatsu, the Bodhisattva of infinite wisdom and mercy. This craft is famously known as the cow that brings good fortune.



27



28

- 27 Peach Picking** Savour the delightful taste of fresh, sweet peaches in the orchards, enjoyed mainly in the Central Region in summer.
- 28 Akabeko Painting** Design the world’s one-and-only Akabeko inspired by the Aizu Region, capturing the essence of your journey as a special memento.





11 March 2011, 2:46 p.m.

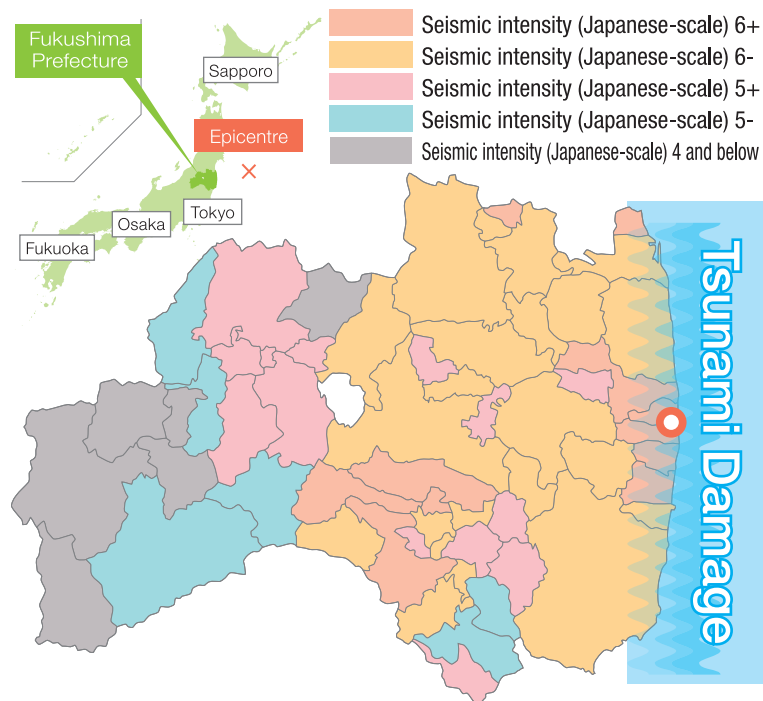
# The Great East Japan Earthquake

## Magnitude 9.0



Source: FUKUSHIMA-MINPO CO., LTD.

### Epicentre and Seismic Intensity in Various Locations within the Prefecture



### Human Casualties

as of 1 Aug. 2025

**4,180 fatalities**  
of which **2,349** were indirect<sup>\*1</sup>

<sup>\*1</sup> Indirect disaster-related fatalities refer to those people who died not as a direct result of the earthquake but for reasons including poor health or extreme fatigue resulting from their evacuation.

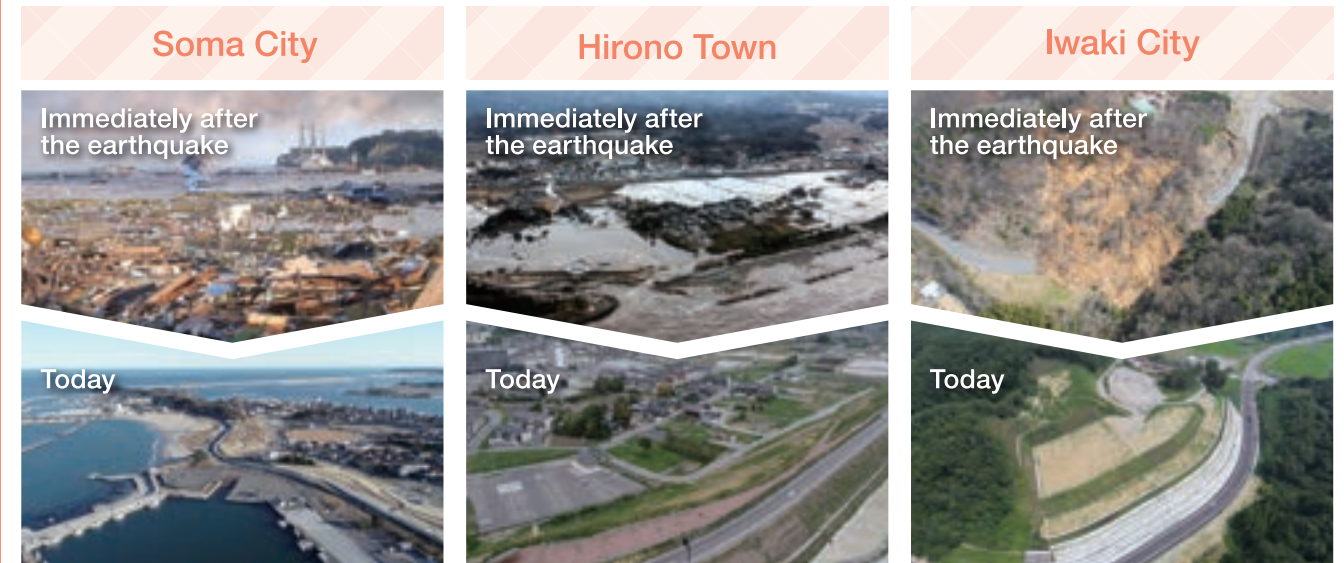
### Total Number of Damaged Homes

as of 1 Aug. 2025

Completely Destroyed	15,505
Partially Destroyed	84,972

### Comparison of the Situation Immediately after the Earthquake to the Situation Today

Following the tremors and the tsunami caused by the Great East Japan Earthquake, significant damage occurred in various areas of Fukushima Prefecture. Core infrastructure and transport networks were severed, and many buildings and other structures were damaged, but reconstruction work is currently ongoing, with almost all of the work now completed.



### Changes in Evacuees and Evacuation Areas

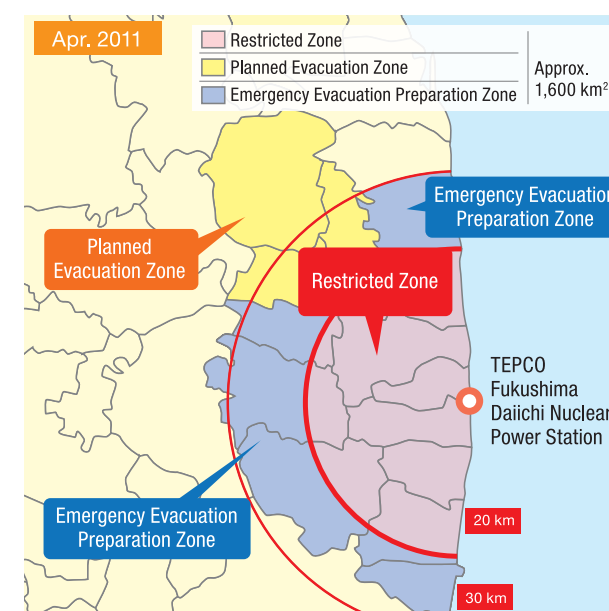
As a result of the nuclear disaster, the vicinity of Fukushima Daiichi Nuclear Power Station was designated as an evacuation zone, forcing residents to evacuate to locations both within and outside the prefecture. Even some residents outside the Evacuation-Designated Zones chose to evacuate voluntarily for a variety of reasons, including concerns about radiation. However, evacuation orders have been lifted in recent years for all areas excluding the Difficult-to-return Zones, and steady progress is being made towards their reconstruction and revitalization.

May 2012

**164,865 people** ▶ **23,987 people**

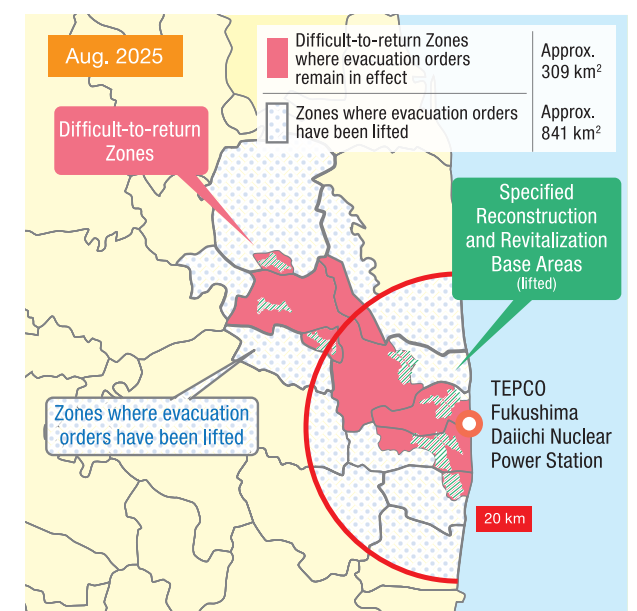
Aug. 2025

Source: Monthly Reports of the Preliminary Report on the Damage Caused by the 2011 Earthquake off the Pacific Coast of Tohoku, issued by the Fukushima Prefecture Disaster Countermeasures Task Force



Between Apr. 2011 and Aug. 2025,

**the restricted areas have decreased from approx. 12% to approx. 2.2% of the prefecture's total area**







▲Decontamination of homes (removal of deposited material)



▲Decontamination of agricultural land (deep ploughing)

## Post-Disaster Environmental Recovery

As air dose rates in Fukushima have significantly decreased due to decontamination efforts and the natural decay of radioactive materials, they are now comparable to those in major cities around the world.

\*Decontamination was completed by Mar. 2018 (excluding the Difficult-to-return Zones).

### Changes in Air Radiation Dose Rates in the Prefecture

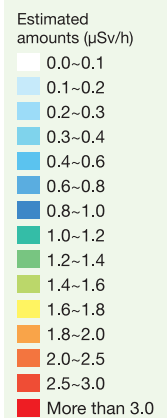


▲ Measurements for 12 Apr. – 16 Apr. 2011



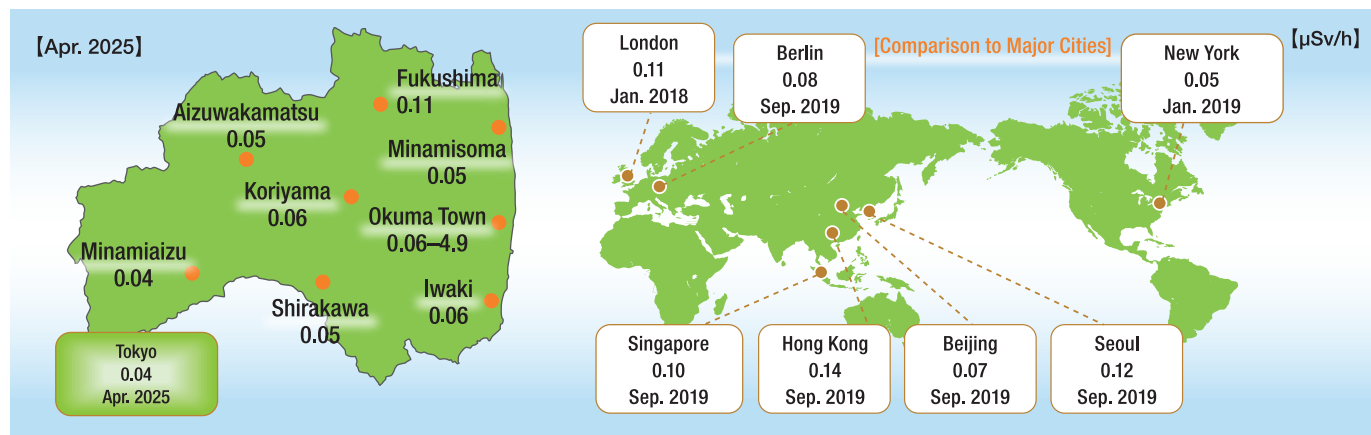
▲ Measurements for 15 Apr. – 14 May 2024

\*Results of 18 Sep. – 11 Oct. 2024 car-borne survey conducted in the difficult-to-return zones  
Source: Steps for Revitalization in Fukushima (26 Aug. 2025 ed.)



### Comparison with Other Locations Around the World

The amount of airborne radiation in Fukushima Prefecture is roughly the same as for major cities overseas (with the exception of the designated evacuation areas).



Source: Steps for Revitalization in Fukushima (26 Aug. 2025 ed.)

### Results of the Inspections of Harvested Vegetables, Fruit, Livestock Products, etc.

All agricultural, forestry, and fisheries products produced in Fukushima Prefecture are inspected prior to shipment to ensure their safety. Items that exceed the standard limits are restricted for shipment by the municipality and are not distributed to the market.

Classification	Total no. of samples	No. of samples exceeding standard limits
Brown Rice <sup>*1</sup>	201	0
Fruit & Vegetables <sup>*2</sup>	1,854	0
Livestock Products (raw milk, meat, eggs)	1,735	1 <sup>*3</sup>
Cultivated Edible Plants & Mushrooms	591	0
Marine Products (seafood and aquaculture)	3,277	0
Wild Edible Plants & Mushrooms	414	2
Freshwater Products (rivers, lakes and ponds)	127	0

\*1 While inspections of all grains of all bags (blanket inspection) had been implemented for brown rice throughout the prefecture until the 2019 rice harvest, this practice transitioned to monitoring starting from the 2020 rice harvest, except for the municipalities that were subject to evacuation orders. Therefore, the number of brown rice samples aligns with those undergoing monitoring. For rice harvested in 2024, blanket inspections were implemented only in eight municipalities, with no samples exceeding the standard limit. \*2 Not including wild fruit. \*3 An anomalous case due to rice straw received from a retired farmer mistakenly being used as animal feed without knowing it contained radioactive materials. Source: Steps for Revitalization in Fukushima (26 Aug. 2025 ed.)

Reference:

Safety standard limits for radioactive cesium in food [Food Sanitation Law] (Bq/kg)

Japan	EU	U.S.A	CODEX
100	1,250	1,200	1,000.

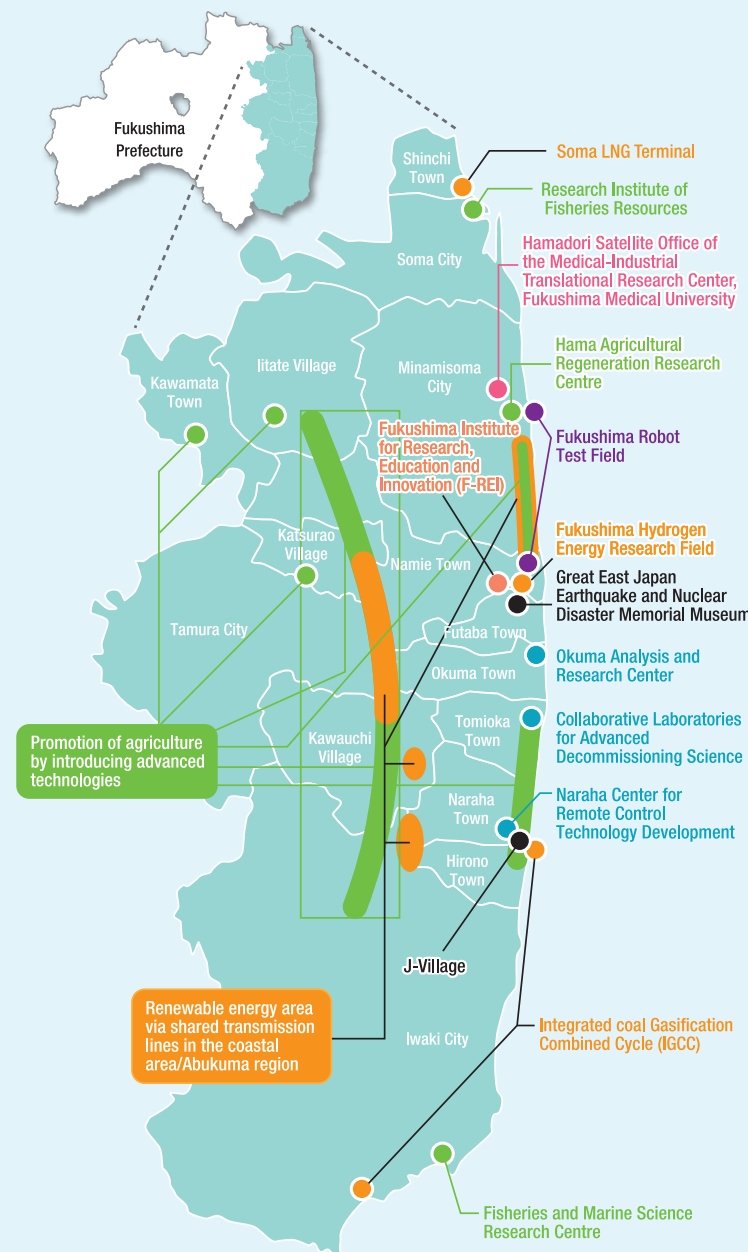
\*International food standards

## To the Future Fukushima Fukushima Innovation Coast Framework

Official website



This is a national project that aims to revitalize industries in the coastal region affected by the Great East Japan Earthquake and the nuclear disaster through the establishment of a new industrial base in the region. Based on the three core pillars of “a region where people can take on any challenge”, “local companies are major players”, and “fostering human resources who will play a major role in the initiative”, this project is taking shape in the coastal region in six priority fields. It also includes various infrastructure development initiatives to achieve these plans, such as industry clustering, human resources development, increasing regional visitor numbers, disseminating information, and re-establishing the living environment.



### Six Major Projects

#### Decommissioning

To move forward with the decommissioning of the nuclear power plant, the Framework draws upon domestic and international wisdom to promote research and development.



#### Robots & Drones

The Framework is integrating the robotics industry with the Fukushima Robot Test Field positioned at its core.



#### Energy, Environment, and Recycling

The Framework is working to establish cutting-edge renewable energy and recycling technologies.



#### Agriculture, Forestry, and Fisheries

The Framework aims to revitalize agriculture, forestry and fisheries using ICT and robotics.



#### Medicine

The Framework supports technological development to develop corporate sales channels.



#### Aerospace

The Framework is working on the development of next-generation air mobility and rockets, as well as strengthening the competitiveness of related local companies.



## Fukushima Institute for Research, Education and Innovation (F-REI)



F-REI facilities development

Established by the Government of Japan in Namie Town in Apr. 2023, F-REI aims to be a world-renowned central institute for creative reconstruction that both achieves revitalization of Fukushima and Tohoku, and contributes to strengthening Japan's scientific technology capabilities and industrial competitiveness. F-REI is using innovations developed through research to raise Japan's industrial competitiveness to the highest global standards, and to spread these effects nationally and globally.

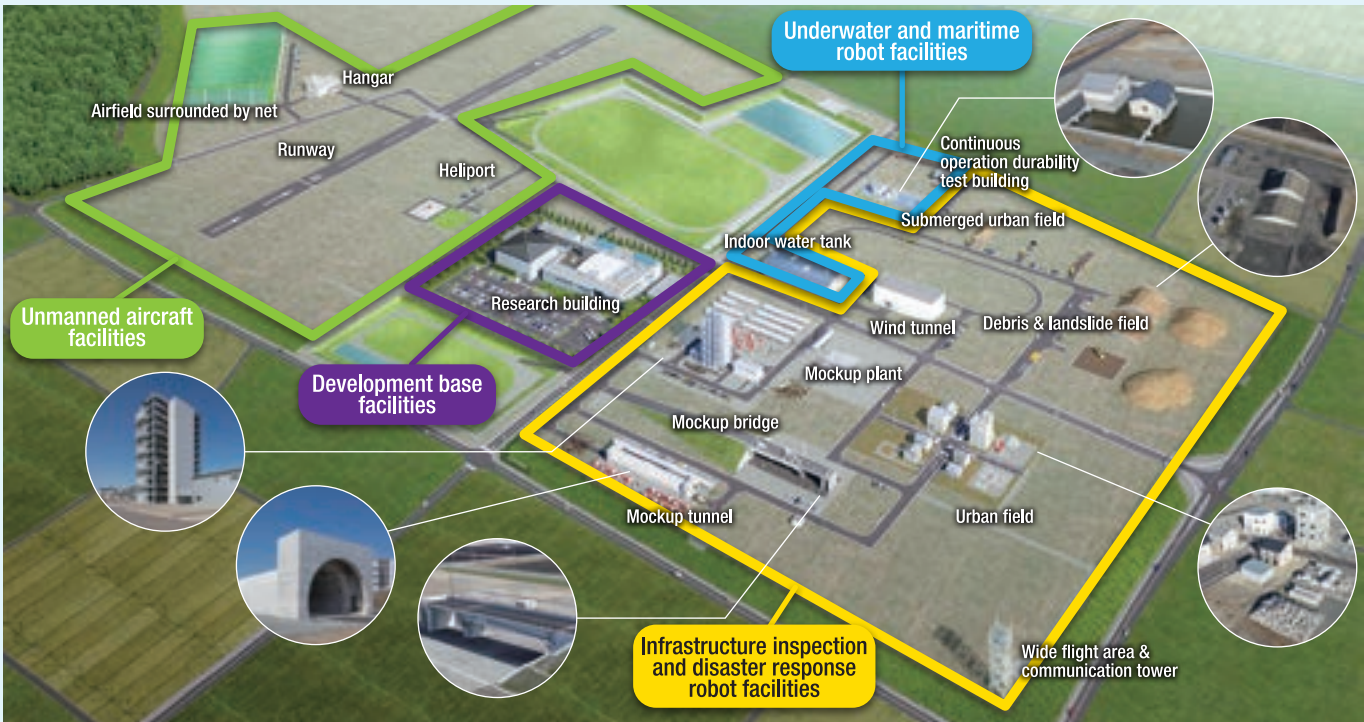


# Robot-related Industries

Fukushima Robot Test Field

Minamisoma City & Namie Town

The Fukushima Robot Test Field is one of the first bases in the country where researchers test robots used in distribution, infrastructure inspection, disaster response and more for demonstration tests, standard regulations and product certification, etc.



Copyright © 2017 Fukushima Prefecture. All Rights Reserved.

# Agriculture, Forestry, and Fisheries Industries

Supporting the development of agriculture, forestry and fisheries industries utilising ICT and robotic technologies, as well as the creation of new employment opportunities and the entry of businesses from other regions and sectors.

## A Production System Aimed at the Revitalization of Agriculture

Berg Fukushima

Kawamata Town



Engaging in the production and sale of vegetable seedlings utilising grafting propagation and plant vaccination technology.

Fukushima Shirohato Farm

Naraha Town



With a dedicated storage facility equipped for sweet potatoes, the company grows and sells safe sweet potato seedlings, promoting the production of sweet potatoes as a local specialty.

Cropland Corporation Chi-No

Namie Town & Iitate Village



Rice for use as a staple food, rice for export and rice for resin raw materials are grown effectively using satellite data and direct-seeded cultivation via drone.

## Development and Promotion of Advanced Technologies in the Fisheries Industry

Fukushima Prefectural Fisheries and Marine Science Research Centre

Iwaki City



A research facility of Fukushima Prefecture equipped with a radiation research building to support the recovery and revitalization of the fisheries industry.

Fukushima Prefectural Research Institute of Fisheries Resources

Soma City



A core facility of Fukushima Prefecture dedicated to the production and supply of aquatic seed stock, as well as research on coastal fishery resources, to support the revitalization of coastal fisheries.

# Medical Industries

Fukushima Prefecture is one of Japan's leading regions for the production of medical devices. Research and development is underway at local universities, as well as at many major medical device manufacturers and local production facilities. In addition, the Fukushima Medical Device Development Support Center was opened in 2016 as the country's first-ever centre for the provision of integrated support for the series of processes encompassing the development of medical devices from development through to commercialisation. On top of this, the Fukushima Medical University Fukushima Global Medical Science Centre Translational Research Center, which opened in 2016 as a centre for the discovery of various drugs to treat cancer and other conditions, is expected to play a role in forming links between the medical and industrial communities.

Fukushima Medical Device Development Support Center

Koriyama City



Fukushima Medical University Fukushima Global Medical Science Centre Translational Research Center

Fukushima City



# Energy, Environment, and Recycling

Fukushima Prefecture is expanding the adoption of renewable energy with the goal of generating renewable energy equivalent to 100% or more of the prefecture's energy demand by around the year 2040, and is also working to develop and cluster related industries through measures such as the development of hubs.

## Renewable Energy-related Facilities in the Prefecture

### 1 Fukushima Renewable Energy Institute, AIST (FREA)

Koriyama City

The National Institute of Advanced Industrial Science and Technology (AIST) developed an R&D hub for renewable energy, which opened on 1 Apr. 2014. Smart System Research Building started operation on 1 Apr. 2016.



Source: National Institute of Advanced Industrial Science and Technology

### 3 Mt. Shinobu/Endogataki Falls/Otama Daiichi Small Hydroelectric Power Plant

Otama Village

Source: Shinobuyama Fukushima Power Co., Ltd.



### 5 Abukuma/Coastal Area Shared Transmission Line Project

In the Abukuma Mountains and the Coastal Region, support is being provided for the adoption of approximately 600MW of renewable energy power generation facilities, and approximately 86km of shared power transmission lines and related facilities were completed in Jul. 2024.



Source: Fukushima Power Transmission Co., Ltd.

Shared power transmission line network in service

### 2 Tsuchiyu Onsen Hot Spring Binary Power Plant

Fukushima City



Source: Genki Up Tsuchiyu Co., Ltd.

### 4 Green Power Aizu Woody Biomass Power Plant

Aizuwakamatsu City



Source: Green Hatsuden Aizu Co., Ltd.

### 6 Koriyama Nunobiki Kogen Wind Farm

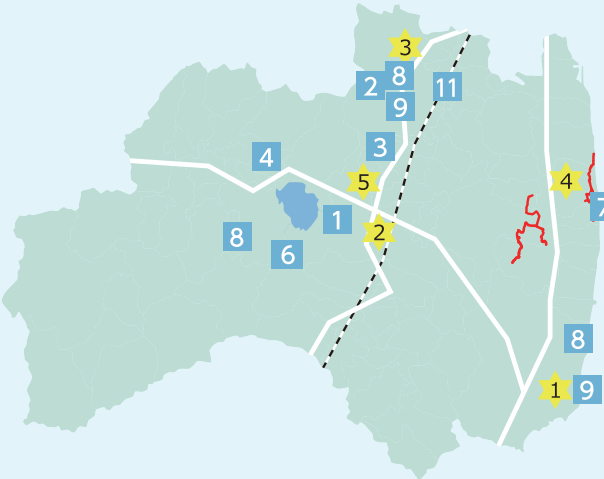
Koriyama City



Source: J-Power (Electric Power Development Co., Ltd.)

### 8 Perovskite solar cells pilot installation

Naraha Town/ Fukushima City / Aizuwakamatsu City



## Hydrogen-related Area

### 7 Fukushima Hydrogen Energy Research Field (FH2R)

Namie Town

Opened in Namie Town on 7 Mar. 2020, it is one of the world's leading demonstration sites for hydrogen production using renewable energy sources (20MW of solar power). It is capable of producing 1,200 Nm<sup>3</sup> per hour (rated) of hydrogen, enough to power approximately 560 fuel-cell vehicles per day.



### 9 Fuel Cell Bus / Fuel Cell Vehicle

A total of 472 fuel cell vehicles, including official vehicles of the prefectural government, have been registered within the prefecture (as of 31 Oct. 2025). Fuel cell patrol cars were introduced by the Fukushima Prefectural Police in Dec. 2024. Fuel cell buses are in service within Iwaki City and between Fukushima City and Kawamata Town. Additionally, fuel cell school buses are in operation in Namie Town.

Fukushima City



Iwaki City



### 10 Hydrogen Stations

Five stationary stations (with six dispensers) and one mobile station (operated in three locations) are currently in operation. Recently in May 2024, a large-scale stationary station capable of servicing large commercial vehicles was opened in Motomiya City.

Iwaki City 1



Koriyama City 2



Fukushima City 3



Namie Town 4



Motomiya City 5



### 11 Hydrogen Energy Research Institute, Faculty of Symbiotic Systems Science, Fukushima University

Fukushima City

Research and human resources development related to hydrogen production, storage, and use are carried out with an emphasis on biomass resources. Opened in 1 Apr. 2024.





Fukushima Prefecture is the only place in the world to have experienced the “compound disaster” of an earthquake, tsunami and nuclear accident. But rather than calling what we learn from the facts, lessons and revitalization initiatives “disaster studies or disaster prevention studies”, we chose “hope tourism”. “Hope tourism” refers to a new, one-of-a-kind educational tour in Fukushima that uses the lessons from the compound disaster to explore and create a sustainable society and to build community.

A Journey to Experience  
the Fukushima Today  
Hope Tourism



## A Field of Diverse Discoveries and Encounters



## 1 The Great East Japan Earthquake and Nuclear Disaster Memorial Museum

This museum is where hope tourism truly begins. A wealth of resources, including images and exhibits, give visitors a complete picture of the events and revitalization efforts from the immediate aftermath of the earthquake and nuclear accident to the present day.

This facility was constructed to share records and lessons from the unprecedented compound disaster and subsequent revitalization efforts with people in Japan and around the world, and to pass them on to future generations. It aims to convey the unique experience of the nuclear disaster in Fukushima. By collecting, archiving and researching information on the revitalization efforts to date, it also aims to pass on the experience to future generations without letting it fade away, and to share it with the rest of the world.

The Great East Japan  
Earthquake and Nuclear  
Disaster Memorial Museum



## Facility Overview

### Prologue

Learn about life in the region before the quake, the situation after, and efforts being made through images projected onto seven screens.

### ④ The Long-term Impact of the Nuclear Disaster

Learn about the impact of the prolonged nuclear disaster and responses to it through materials, explanations, and more.

### ③ The Voices of Fukushima

Share the feelings of residents of the prefecture who lived through this unprecedented disaster through their testimonials, memorabilia, and other artifacts.

### ① The Beginnings of the Disaster

Trace in chronological order the time before the disaster, when it happened, and the immediate aftermath.

### ② The Immediate Response to the Nuclear Power Station Accident

Look back on the situation immediately after the nuclear power plant accident and its distinctive characteristics with the help of testimonials and other information.

### ⑤ Striving for Revitalization

Learn how Fukushima Prefecture is overcoming difficulties on the path to revitalization.



▲ An exterior appearance that blends into the natural landscape. The rooftop offers a panoramic view of the coast and ocean.



▲ A fire engine damaged by the tsunami is on display.



▲ Visitors can see a diorama of TEPCO's Fukushima Daiichi Nuclear Power Station after the accident.

## 2 Disaster Remains of Namie Municipal Ukedo Elementary School



As the only preserved disaster remains in the prefecture, this site conveys the threat of tsunamis to future generations. Located about 300 metres from the coast, everyone was miraculously able to evacuate safely thanks to the swift judgement of the staff and the cooperation of the children. Conditions at the school are still almost the same as when the disaster struck.

### Ukedo Elementary School

▲ Photo at the time of the earthquake

Ukedo Elementary  
School Website



## 4 The Historical Archive Museum of Tomioka



This museum displays local materials conveying the town's beginnings and distinctive qualities, as well as remains left after the Great East Japan Earthquake and nuclear disaster. A patrol car is on display here in which two police officers lost their lives while helping people to evacuate.

The Historical  
Archive Museum of  
Tomioka Website



## 6 Fukushima Prefectural Centre for Environmental Creation Communication Building Commutan Fukushima

### Facility Overview

This facility offers visitors interactive exhibits that help deepen their awareness of Fukushima's environmental recovery and revitalization. Here, they can enjoy learning about Fukushima's current state, radiation, and the environment.

Commutan  
Fukushima Website



### ① Fukushima since 11 Mar. 2011

Footsteps towards the revitalization of Fukushima.

### ② Future Creation Area

Learn about Fukushima today, and envision the future together!

### ③ Environmental Recovery Area

Learn about radiation and the research at the Centre for Environmental Creation!

### ④ Environmental Creation Area

Learn about the environment and new energy alternatives to nuclear power.

### ⑤ Environmental Creation Theatre

Powerful visuals and sound! A full spherical dome theatre.

### ⑥ Tangible Earth

Experience a real-time view of the Earth from space with an interactive globe.

## 3 J-Village



National Training Center J-Village

J-Village, sacred ground for soccer players, became the operational base for the nuclear accident response following the Great East Japan Earthquake on 11 Mar. 2011, suspending its operations. In 2019, it was reborn as a symbol of Fukushima's revitalization, and has been designated as the fixed venue for boys' soccer competition in All Japan High School Sports (INTERHIGH) from 2024, igniting the spirit of revitalization in Fukushima Prefecture.



J-Village Website



## 5 Iwaki 3.11 Memorial and Revitalization Museum



This facility explains Iwaki City's experience of the disaster for future generations. It also aims to raise awareness of disaster risk and disaster prevention.

Iwaki 3.11 Memorial and  
Revitalisation Museum Website



This miniature replica of the Fukushima Daiichi Nuclear Power Station shows the state it was in immediately after the accident.



The “Environmental Creation Theatre”, one of only two 360° dome theatres in Japan, immerses visitors in a powerful visual and sound experience.