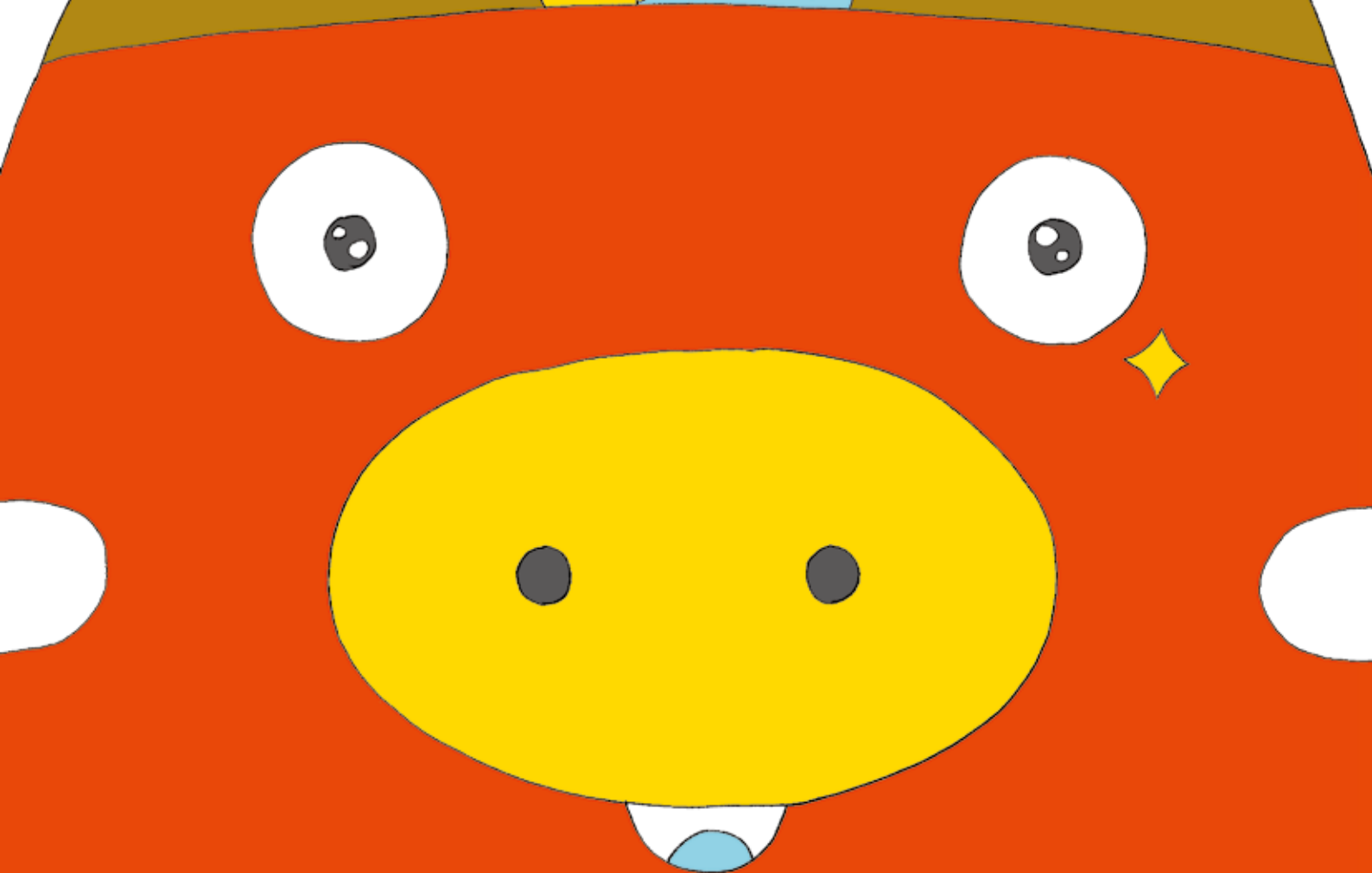


# Fukushima Map

The more  
you know,  
the more fun  
you get.

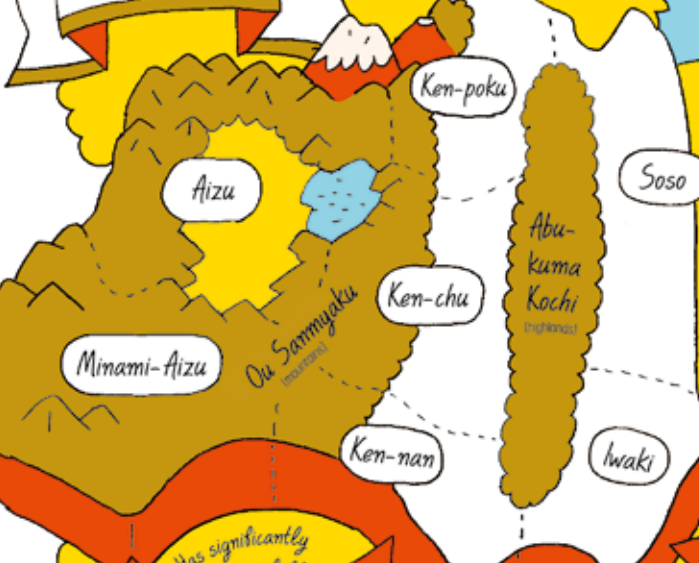




**Utakushima, Fukushima**  
(Utakushi + Shima)

Combination of an old Japanese adjective, "utakushi" (beautiful, graceful), "Fukushima" which rhymes with and Shima (island) as the prefecture, though not an island, resembles its Australia geographic shape.

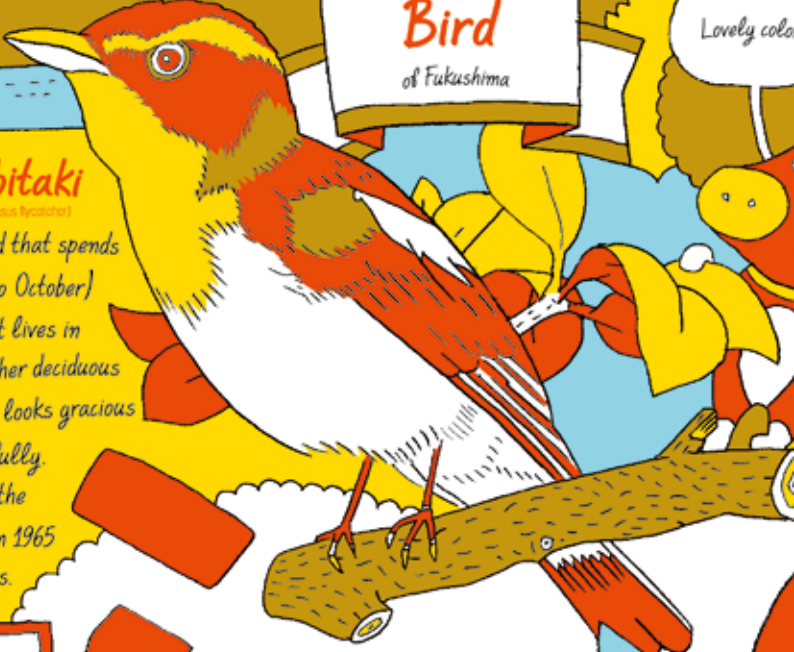
### Regions of Fukushima



### Kibitaki

A migrant bird that spends summer (April to October) in Fukushima. It lives in mountains to higher deciduous broadleaf forest. It looks gracious and sings beautifully. It was chosen as the prefecture's bird in 1965 by citizens' votes.

### Bird of Fukushima



### Fu-shaped symbol

The character ふ (fu), the first letter of Fukushima when written in hiragana, was symbolized for the seal.



### Song of Fukushima

あゝ福島県  
あゝ福島県  
あゝ福島県  
あゝ福島県  
あゝ福島県  
あゝ福島県  
あゝ福島県  
あゝ福島県  
あゝ福島県  
あゝ福島県

あゝ福島県  
あゝ福島県  
あゝ福島県  
あゝ福島県  
あゝ福島県  
あゝ福島県  
あゝ福島県  
あゝ福島県  
あゝ福島県  
あゝ福島県

### Aizu

### Naka-dori

Has significantly more snow falls than in the other regions. A basin with hot summers and shivering cold winter winds. Occasionally it snows.

### Hama-dori

It seldom snows. Unexpectedly pleasant during summer.

### Flower of Fukushima



Small evergreen tree of the Ericaceae (azaleas) family, 1 to 3m (11 to 3.3 yd) in height, and flowers of white and pale pink.

### Nemoto shakunage

The plant grows in communities at Mts. Azuma and Adataru. In 1954, when NHK\* celebrated its 29th anniversary of broadcasting, it ran a special program and presented this as a local flower.

### Seal of Fukushima

あゝ福島県  
あゝ福島県  
あゝ福島県  
あゝ福島県  
あゝ福島県  
あゝ福島県  
あゝ福島県  
あゝ福島県  
あゝ福島県  
あゝ福島県

### Tree of Fukushima

### Zelkova

A tall deciduous tree of the Ulmaceae (elm) family, the tree grows fast and lives long, favoring sunny places. It was chosen as the prefecture's tree in 1966 by citizens' votes.

### Fukushima's Pride

Blessed with the wealth of nature, Fukushima's producers and craftspeople work hard everyday to create works and products they can take pride in, sparing no effort or sweat.

### Location of Fukushima

"Location of the prefectural office"  
East longitude: 140°28' 04"  
North latitude: 37°45' 00"

### Area of Fukushima

13,783.74 km<sup>2</sup>

### Population of Fukushima

1,900,253  
(as of October 1, 2016)

### Shioyazaki Lighthouse



### Symbol character of Fukushima's revitalization



Designed and named after the prefectural bird, kibitaki (norcinus flycatcher), he likes traveling with his family.

Hello, I am Beko-taro.

### "Fukushima Map" Navigator

# Fuku-pedia

## An Introduction to Fukushima

**Future From Fukushima**  
(It's get named with Fukushima)

This slogan calls for the cooperation of each and everyone in the prefecture's rebuilding from the March 2011 devastation. It looks forward to the future and intends to create new moves for a brighter tomorrow.



Your, my, and everyone's each future Fukushima.

# あなたの、わたしの、みんなの、

# それぞれのこれから

The more I think about Fukushima reconstruction and revitalization, the more attractions I notice about Fukushima.

I would like you to watch how new Fukushima and changing Fukushima.

I would like various people to know about Fukushima. I need to know it myself.

I would like to tell Fukushima's charm as it is. I hope I will.

Fukushima is huge.

My favorite person is from Fukushima. So, I love it so much.

It is important to accurately know about the current situation in Fukushima without confronting it right

I would like to convey my experience in Fukushima, like what I had fun in Fukushima and people I met.

I have been saved by many people. So, now my turn to help them.

I would like to know more about Fukushima, think about Fukushima.

people accumulate efforts

There are many things you don't know, unless you come and see it actually.

Humble prefectural people, they have an inherent power.

today as well.

I, as a prefectural citizen, would like to go see various regions in Fukushima.

I don't want people to misunderstand Fukushima.

It is necessary to move along while understanding each other at the same time.

I have tears in my eyes, but I won't give up.

In particular, I love Mt. Bandai, Mt. Azama, and beautiful mountains

There are many things you don't know, unless you come and see it actually.

Then, human circle

There are and will be people who are laughing, crying, and living day by day now and in the future.

future as well.

Various

I wanted to live in Fukushima, now I am living. There were many things I did not know.

I come into contact with people and the nature. Now, Fukushima is my favorite place. I feel like I have another home for me.

I want Fukushima to be a place

where children can have hope for the future.

has surely

in the

gotten bigger. It will continue

I moved out of Fukushima. But, I worry about Fukushima even now.

There are various types of people, interesting people in Fukushima.

I would like to focus on the fact that there are people in various environments.

I am so happy to hear that many supports have been sent to us from various countries and regions.

One by one.

It takes a while, but we are moving forward little by little.

I would like everyone to come to Fukushima for school excursion trips.

I would like to give continuous supports for Fukushima making efforts.

Enhancement of strength for disaster prevention based on "multi-layered prevention" for sea defenses, forests for disaster prevention, roads,

and the like: Bases for logistics of harbors, and restoration of JR Joban Line and Tadami Line.

## 11 Major Projects of Fukushima Prefecture

# 3.11 2011

**1** Project for Countermeasures against Declining Population and Aging Society

**2** Preservation and prefectural settlement of many various generation living together and living nearby, the zero-waiting list for nursery schools, expansion of visitors, and town creation by renovation.

**3** Fukushima Reconstruction and Revitalization Acceleration Project

Arrangement of environment in anticipation of lift of evacuation order, adoption of new technologies through robot study, creation of industries, and human development.

**4** Environment Rehabilitation Project

Decontamination for preservation of an environment that allows safe living, preservation of food safety, research on radioactive materials, and safety monitoring for reactor decommissioning.

**5** Mental Health Project

Assistance for health, medicine, education, and employment for safety and secure life, and support for preservation for dwellings and returning to Fukushima.

**6** Project for Fostering Children and Young People

Community medicine and welfare for mental health preservation for mental health preservation for the most and enhancement, provision of the most advanced medicine, and mental care promotion.

**7** Project for Revitalization for agriculture, forestry, and fishery industries

Monitoring inspection for attempt to secure food safety and security, promotion of the 6th local industry, and fostering and preservation of future bearers.

**8** Project for Fukushima Reconstruction and Revitalization for Small and Medium Sized Enterprises

Branding for prefectural products, assistance for overseas transactions, personnel development, and assistance for recruitment that allow local industries to be glorious.

**9** Project for Creation of New Industries

Construction of industry foundation with sustainability based on the concentration of industries related to renewable energy, medical devices and robots.

**10** Project for Countermeasures against Rumors and Memory Fading

Dispatching of accurate information both at home and abroad, exploring of sales channels for prefectural products, promotion of solicitation of tourists, and restoration of educational tours.

**11** Project for Enhancement of Town Creation Involving Fukushima Reconstruction and Revitalization and Exchange Network Foundations

Enhancement of strength for disaster prevention based on "multi-layered prevention" for sea defenses, forests for disaster prevention, roads,

**11** Project for Enhancement of Town Creation Involving Fukushima Reconstruction and Revitalization and Exchange Network Foundations

Enhancement of strength for disaster prevention based on "multi-layered prevention" for sea defenses, forests for disaster prevention, roads,

and the like: Bases for logistics of harbors, and restoration of JR Joban Line and Tadami Line.

Construction of industry foundation with sustainability based on the concentration of industries related to renewable energy, medical devices and robots.

**11** Project for Enhancement of Town Creation Involving Fukushima Reconstruction and Revitalization and Exchange Network Foundations

Enhancement of strength for disaster prevention based on "multi-layered prevention" for sea defenses, forests for disaster prevention, roads,

and the like: Bases for logistics of harbors, and restoration of JR Joban Line and Tadami Line.

Construction of industry foundation with sustainability based on the concentration of industries related to renewable energy, medical devices and robots.







# Fukushima



What aspect of Fukushima  
do you know?

To know Fukushima,  
start a search on  
the following  
organizations.

Sights in Fukushima JAPAN

Search

<http://www.tif.ne.jp/>  
(<http://www.tif.ne.jp/lang/en/>)

Facebook page of Future From Fukushima

Search

<https://www.facebook.com/FutureFromFukushima/>

Websites of Tourism Promotion in Fukushima Prefecture

Search

<https://www.pref.fukushima.lg.jp/sec/32031a/kanko-koryu.html>